



### APPLICATIONS:

For drainage applications where soil and building foundations are prone to differential movement which causes pipe fracture. Also suitable for pipe repairs, stacks, cut ins and flexible connections.

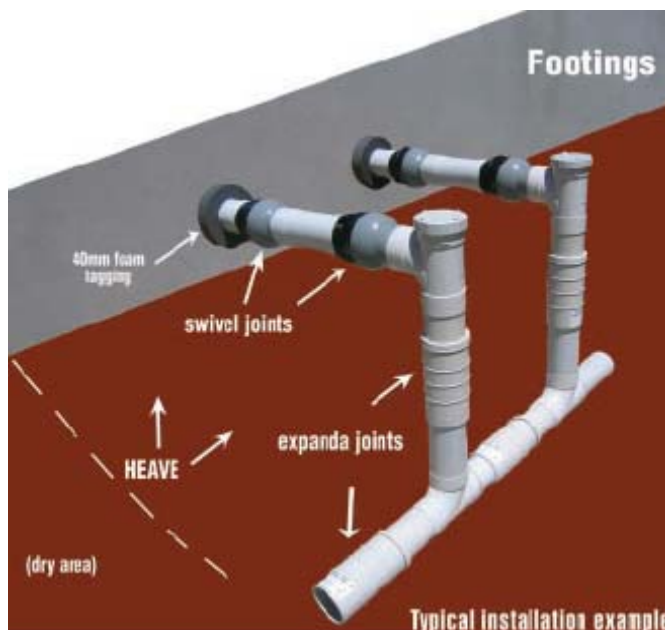
### FEATURES:

**Expanda** fittings have the ability to allow expansion and contraction of up to 150 mm total. They can be used for pipe repair and extension.

**Swivel** fittings have the ability to rotate 360 degrees and 15 degrees off straight line. They are also able to expand 50 mm and 60 mm for the 100mm and 150 mm types respectively.

### BENEFITS:

Meets JAS-ANZ standards and also carries the Australian Watermark standard.



EXPANDA100	100 mm M&F solvent connections
EXPANDA150	150 mm M&F solvent connections
SWIVEL100	100 mm M&F solvent connections
SWIVEL150	150 mm M&F solvent connections

Other products available: EXPANSION BENDS, SILT TRAPS, SILT TRAP BUCKETS, PUDDLE FLANGES, FLOOR FLANGES, STORMWATER REDUCERS, DOWNPIPE ADAPTORS, FINE FIT ADAPTORS, PIPE SUPPORT BRACKETS, EXPANDA LUBE, EXPANDA TAPE

Available from: **Wallace Pumps**

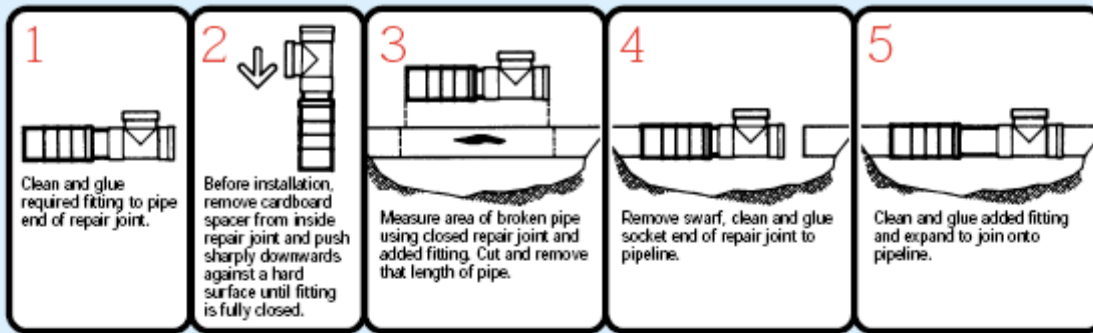
[www.wallacepumps.co.nz](http://www.wallacepumps.co.nz)

Auckland: 09-6229100

Christchurch 03-3656453

Palmerston North 06-3234445

## INSTRUCTIONS FOR USE OF THE **EXPANDA JOINT** FOR CUT-INS, REPAIR AND STACK WORK



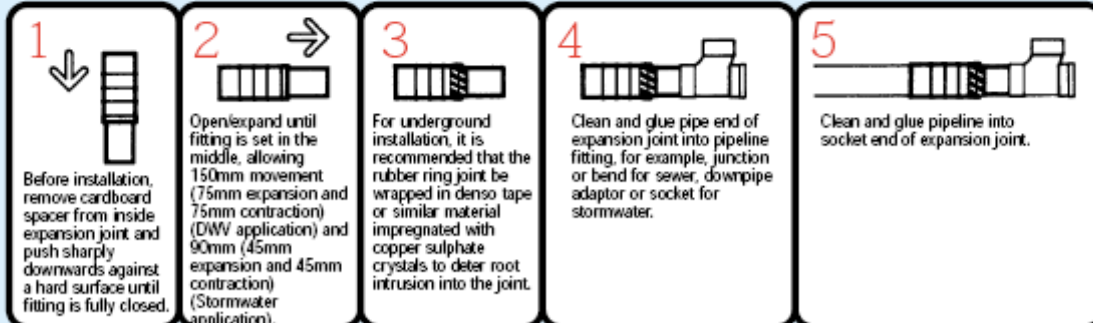
To allow for future soil movement it is preferable that the **EXPANDA JOINT** is not fully expanded.

Previous methods of repair have been considered "difficult", "inadequate", "inefficient" and "risky" by some government authorities, astute plumbers, drainlayers and many construction designers.

The **EXPANDA JOINT** removes the difficulty. It is most adequate and efficient and when installed correctly, ensures a water-tight seal with allowance for soil movement, which may have been the cause of the original break.

## INSTRUCTIONS FOR USE OF THE **EXPANDA JOINT** AS A FLEXIBLE COUPLING IN PLUMBING AND DRAINAGE INSTALLATIONS

Ref. AS 2870-1996 Sections 5.5.4 (b) and 6.6 (f)



Current sales of **EXPANDA JOINT** throughout Australia confirms the demand for Sewer and Stormwater fittings which incorporate flexibility for movement in reactive soils.

The **EXPANDA JOINT** is also being used extensively in repair because they are a quick, easy and cost-effective method of cutting in to an existing drainage installation.



Available from: **Wallace Pumps**

[www.wallacepumps.co.nz](http://www.wallacepumps.co.nz)

Auckland: 09-6229100

Christchurch 03-3656453

Palmerston North 06-3234445

